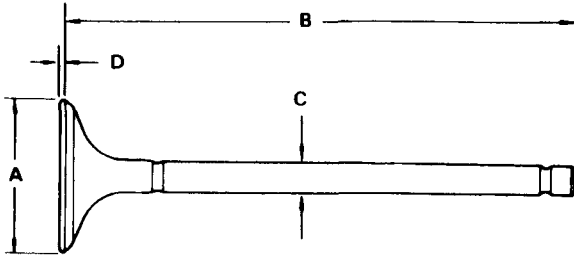


Valves, Valve Springs and Valve Seals

Removal(cont'd)



Intake Valve Dimensions

- A Standard (New): 33.90 — 34.10 mm
(1.335 — 1.343 in)
- B Standard (New): 113.58 — 113.88 mm
(4.472 — 4.483 in)
- C Standard (New): 5.48 — 5.49 mm
(0.216 — 0.216 in)
- C Service Limit: 5.45 mm (0.215 in)
- D Standard (New): 0.85 — 1.15 mm
(0.033 — 0.045 in)
- D Service Limit: 0.65 mm (0.026 in)

Exhaust Valve Dimensions

- A Standard (New): 27.90 — 28.10 mm
(1.098 — 1.106 in)
- B Standard (New): 116.03 — 116.33 mm
(4.568 — 4.580 in)
- C Standard (New): 5.45 — 5.46 mm
(0.215 — 0.215 in)
- C Service Limit: 5.42 mm (0.213 in)
- D Standard (New): 1.35 — 1.65 mm
(0.053 — 0.065 in)
- D Service Limit: 1.15 mm (0.045 in)

Cylinder Heads

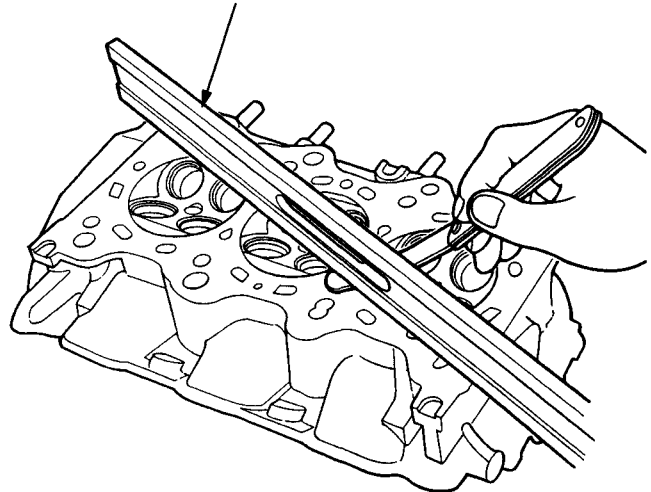
Warpage

NOTE: If camshaft-to-holder oil clearances (see page 6-15) are not within specification, the head cannot be resurfaced.

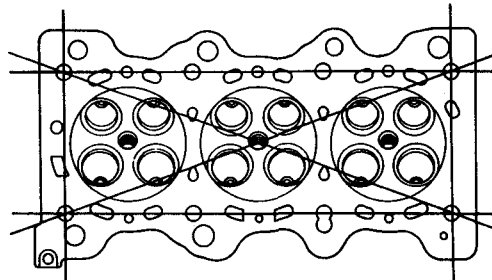
If camshaft-to-holder oil clearances are within specifications, check the head for warpage.

- If warpage is less than 0.05 mm (0.002 in) cylinder head resurfacing is not required.
- If warpage is between 0.05 mm (0.002 in) and 0.2 mm (0.01 in), resurface cylinder head.
- Maximum resurface limit is 0.2 mm (0.01 in) based on a height of 100 mm (3.9 in)

PRECISION STRAIGHT EDGE



Measure along edges, and 3 ways across center.



Measure the cylinder head height at several points.

Cylinder Head Height:

Standard (New): 99.95 — 100.05 mm
(3.935 — 3.939 in)

